



## “Small town charm with a friendly atmosphere”

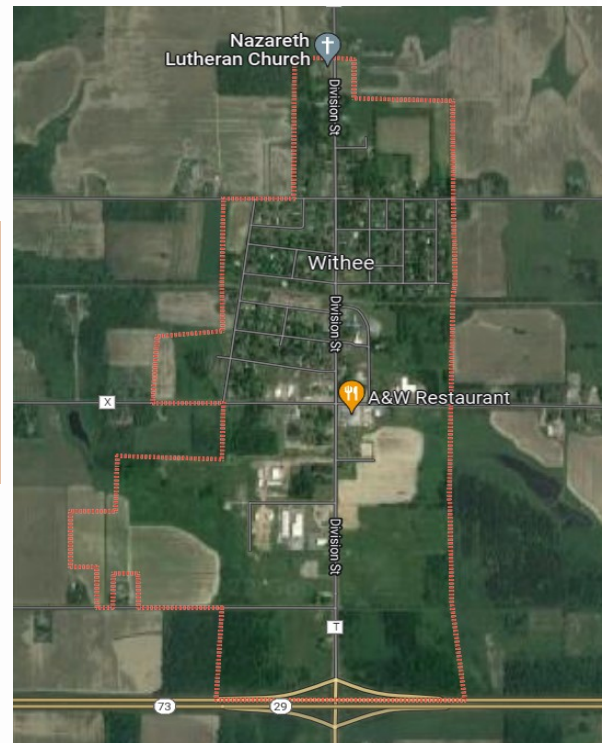
Located just off the Black River, Withee offers many opportunities for the outdoor enthusiast. The avid fisherman will find the perfect spot to fish. The North Woods offers many opportunities for those who enjoy hunting. For the active person, there is softball, biking, fishing, pickle ball courts and snowmobiling.

The Village of Withee was founded in 1870, and named after a school teacher from Maine, W.H. Withee and was incorporated as a village in 1901.

### Withee offers year-round activities for everyone!

Cross-country skiing, excellent sledding hills, ice skating, snowmobiling trails, basketball, bike trails, horseshoe pits, public parks, softball, volleyball & pickleball courts. Summer recreation programs include youth softball and baseball also library programs throughout summer.

The O-W Sportsmen's Club offers indoor brush shoots to enjoy. Annual events include Withee Days, O-W Dairy Breakfast, Breakfast at the Orchard and many others.



#### Withee Clerk:

511 Division St, PO Box A, Withee, WI 54498-0105  
Ph: (715) 229-4319 , E-mail: [clerk@villageofwithee.com](mailto:clerk@villageofwithee.com)



# Businesses in Withee area

## Shopping

Black River Orchard  
Brubaker Sewing & Furniture  
Country View Power Tools  
DJ's Metal Art  
Five Star Supply  
Hene Supply LLC  
Munson Bridge Winery  
Nolt's Upholstery  
One Love Bread LLC  
O-W Pharmacy  
Red Rooster Herbs

## Greenhouses

En-Ve Acres  
Frenchtown Greenhouse  
Central WI Produce Auction  
Fairview Farms  
Longwood Gardens  
Posy Patch  
Weaver's Greenhouse

## Churches & Library

Community Alliance  
Nazareth Lutheran ELCA  
St John's Lutheran  
United Methodist  
Withee Public Library

## Butcher Shops

Black River Meats  
Martin's Meat Processing  
River Valley Meats

## Food Hubs & Pubs

A & W  
Chester's Chicken  
I.G.Y.S. Bar & Grill  
Lana's Scoops  
Midway Bar  
Paula's Country Diner

## Salons

Graphic Hair Design  
Laurie's Hair Creation

## Repair Shops

Burkholder Tractor Repair  
Englebretson Garage  
Frenchtown Repair  
Hoover Silo Repair LLC  
Martins Repair  
RC's Welding & Fabrication  
S&S Collision & Restoration  
Stumpner Repair

## Retirement

40 Winks Lodging  
Just Like Home

## Banks, Insurance, Realty

AbbyBank  
Forward Bank  
Forward Insurance  
Woodland Realty

## Trucking Companies

Andrew T Fawley Trucking  
Ogurek Trucking

## Contractors & Electric Co.

Area Wide Concrete & Excavating  
Badger Livestock Equipment  
Brubaker Construction  
Baehr Electric Co.  
Black River Spray Foam  
Country Forest Products  
Custom Concrete & Timber  
Hatlestad Construction  
Jerry's Painting & Staining  
Joe's Refrigeration Inc  
Jon-Mar Refrigeration  
Mengel Painting  
Petersen Seal Coating/Power-washing  
Precision Truss  
R. Z Construction  
Rivers Edge Metal Roofing  
Shelton Painting  
Slobodnik Gravel & Excavating  
Snyder Exteriors  
Sunset Painting  
WE Energies  
Wells Painting-Contractor

## Additional Businesses

Buck Tales Taxidermy  
Hollow Dairy Supply  
Maurina Monuments  
Maurina Storage Units  
Midway Steel  
Premier Livestock & Auctions LLC  
Railside Enterprise  
Rod & Staff Publishers  
Silver Star Metals  
She Shed – Reflexology  
The Honey Kohn's  
The Ten Cent Hole Airbnb  
Tri-County Lawn & Garden  
Wakefield-Vette/ Wakefield Thermal  
Withee BP Gas Station & Conv. Store  
Withee Car Wash  
Withee Oil Company  
Withee Tire LLC  
Withee Toss in Wash

## Clark County Economic Development & Tourism Bureau

301 N Main St, Loyal, WI 54446

715-255-9100 [info@clarkcountyedc.org](mailto:info@clarkcountyedc.org) [www.clarkcountywi.org](http://www.clarkcountywi.org)